

Current Transducer/Sensor

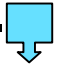
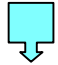



SB24 DC Current Transducer

FEATURES

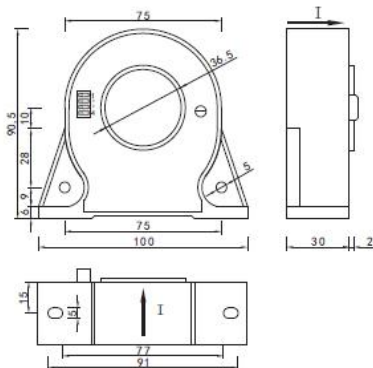
- *Hall close-loop operational principle (electromagnetic balance principle), can measure current in any waveform, the output terminal can reflect the waveforms parameters of input current
- *Response time is quick $\leq 1\mu\text{s}$
- *Controlled by temperature compensation circuit, measure accurately
- *Perforation input, plug terminal, screw fastening plane mounting
- *It widely applies to all kinds of industrial current online detection system
- *Dimension (mm): 100(L) \times 30(W) \times 90.5(H) Aperture: 36mm

MODEL

LF-DI12-  B24 -1.0/
A B C

Model selection 1: LF-DI12-25B24-1.0/0~200A
 Explanation: this product is a 0~200A input range, 0~200mA tracking output, $\pm 12\text{V}$ power supply, B24 style 1-way DC current transducer.

DIMENSION DIAGRAM



ELECTRICAL DATA

- *Standards: GB/13850-1998, IEC688:1992
- *Input Range : 0~400A can choose 0~50A, 0~300A etc
- *Accuracy Grade : $\leq 0.5\%$.F.S
- *Linearity Degree: better than 0.2%
- *Response Time: $\leq 1\mu\text{s}$
- *Frequency: 0~100KHZ
- *Offset Voltage: $\leq 20\text{mV}$
- *Temperature Characteristics: $\leq 150\text{PPM}/^\circ\text{C}$ (0~50 $^\circ\text{C}$)
- *Power Consumption : $\leq 30\text{mA}$ +output current
- *Isolation Withstanding Voltage: AC2.0KV/min*1mA between input/output/ power
- *Load Capacity : 2 times current continuous, 30 times 1 second
- *Flame Retardancy: UL94-V0
- *Working Environment: -10 $^\circ\text{C}$ ~50 $^\circ\text{C}$,20%~90% without condensation
- *Storage Environment: -40 $^\circ\text{C}$ ~70 $^\circ\text{C}$,20%~95% without condensation

MODEL REMARKS

A---Output	B---Power supply
2. Tracking current output (turnover rate 1/1000) 5: $\pm 12\text{V} \pm 10\%$	
2a. Tracking current output 6: $\pm 15\text{V} \pm 10\%$ (turnover rate 1/2000)	
T: Special output	C---Current input range

CONNECTION DIAGRAM

